

Webinar: SOCl in 2024: Leveraging AI to Streamline Compliance



LexisNexis® | *Regulatory Compliance*

YOUR HOSTS



Darren Jacobs
Chief Product Officer
ReadiNow



Michael Nelson
Senior Product Specialist
LexisNexis | Regulatory Compliance



WHO IS LEXISNEXIS

LEXISNEXIS LEGAL & PROFESSIONAL FAST FACTS

10.5k employees

We are a data and analytics company with 10,500 colleagues serving customers in more than 150 countries.

We serve Lawyers, Solicitors, Barristers, Judges, In-House Counsel Company Secretaries and GRC professionals, globally.

1.8k technologists

We have more than 1,800 technologists with advanced technology skills working in our local innovation centers around the world.

2.5pb Content

Our global content collection contains roughly 2.5 petabytes of data, which is 150x the size of Wikipedia.

144b documents

Our global legal and news database contains 144 billion documents and records with 1.2 million new legal documents added daily.

39k sources

Nexis news and business content includes over 39,000 premium sources in 45 languages, covering more than 180 countries. It has data including 500 million company profiles with a content archive that dates back 45 years.

293m dockets

LexisNexis content includes more than 293 million court dockets and documents, over 159 million patent documents, 4.25 million State Trial Orders, and 1.45 million jury verdict and settlement documents.

144m patent doc's

PatentSight includes objective ratings of the innovative strength (Patent Asset Index) of more than 144 million patent documents from more than 100 countries.

55k News Articles

In 2022, Law360 produced over 55,000 news and analysis articles. Legal analytics tool Lex Machina has normalized over 102 million counsel mentions and over 54 million party mentions since 2016.

Rule of Law

LexisNexis Legal & Professional is a leading global provider of information and analytics that enable professionals in legal, corporate, government and non-profit organisations to improve decision-making and achieve better business outcomes.

WE HELP YOU ON YOUR PATH TO COMPLIANCE



Action Oriented and Practical

- Easy-to-navigate topics, organised by operational business processes.
- Provides guidance in easy-to-understand business English.
- Practical Tools include guidance notes, checklists and more.



Regulatory Alerts

- Alerts customers to changes, and how these changes impact an organisation's legal responsibilities.
- 3 types of Alerts- FYI, Action Required and News



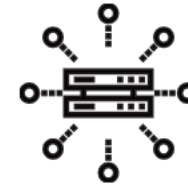
Legal Registers

- WHAT are my responsibilities?
- WHAT do I need to do?
- HOW do I do it?
- WHAT are the legal consequences?
- WHERE can I get more information?



Expert Authorship

- We use leading local and international legal and industry experts to interpret all the relevant legislative and regulatory materials.
- Provides significant savings in research time and cost.



Technology Options

- Content is imported into your existing GRC / ERM system via our API.
- We work with a panel of carefully selected software partners to ensure that we can offer a complete package of content and software.

SOCI Regulation at a High Level

WEBINAR | SOCI in 2024: Leveraging AI to Streamline Compliance

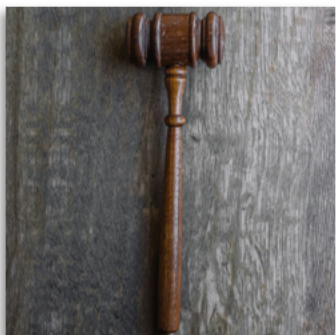
The 2023 Critical Infrastructure Resilience Strategy defines *critical infrastructure* as:

Those physical facilities, supply chains, information technologies and communication networks, which if destroyed, degraded or rendered unavailable for an extended period, would significantly impact the social or economic wellbeing of the nation, or affect Australia's ability to conduct national defence and ensure national security.

The *Security of Critical Infrastructure Act 2018* (Cth) (SOCI) defines each class of critical infrastructure asset. A single critical infrastructure asset includes multiple parts which function together as a system or network. This includes premises, computers, and data.

SOCI LEGISLATION AT A HIGH LEVEL

SOCI has undergone extensive changes since its inception in 2018 - first in 2021 when critical infrastructure increased from 4 sectors to 11 sectors and 22 asset classes, and then in 2022 when risk management program obligations were added.



Effective DEC 2021

Security Legislation
Amendment (Critical
Infrastructure) Act 2021

Expands Sectors:

- *New government assistance obligations*
- *Provide notice of any cybersecurity incident w impact on CI assets*



Effective APR 2022

Security Legislation
Amendment (Critical
Infrastructure
Protection) Act 2022

*Responsible entities to
create/maintain critical
infrastructure risk
management program*

*Enhanced cybersecurity
obligations for
operators of systems of
national significance*



Rules

Security of Critical
Infrastructure
(Definitions) Rules
2021/ (Application)
Rules 2022



Requirements

Risk Management
Program (CIRMP)

WHERE CHANGE IS HAPPENING

SOCI OUTLINES:

- **The legal obligations you have if you own, operate, or have direct interests in critical infrastructure assets**
- **How the government can support you if an incident occurs that impacts your critical infrastructure asset**



Communications



Data Storage



Defence



Energy



Financial
Services &
Markets



Food &
Groceries



Higher
Education
& Research



Healthcare
& Medical



Space
Technology



Transport



Water &
Sewage

11 SECTORS OF SOCl

SOCI OBLIGATIONS

PROVIDE

... operational and ownership information to the Register of Critical Infrastructure Assets

REPORT

... cyber incidents which impact the delivery of essential services to the Australian Cyber

ADOPT

... maintain and comply with a written risk management program

For assets deemed as Systems of National Significance Enhanced Cyber Security Obligations (ECSO)

- » Develop cyber security incident response plans to prepare for a cyber security incident.
- » Undertake cyber security exercises to build cyber preparedness.
- » Undertake vulnerability assessments to identify vulnerabilities for remediation.
- » Provide system information to develop and maintain a near real-time threat picture.

SOCI DISCLOSURE

GOVERNMENT ASSISTANCE

The SOCI Act also includes government assistance measures, which outline how the government can help industry respond to cyber security incidents.

These measures apply only to incidents that will cause serious harm to Australia's prosperity, national security, or defence.

CRITICAL INFRASTRUCTURE ASSETS

The SOCI Act protects information about critical infrastructure assets.

It is an offence to disclose information about these assets, even if you are a responsible entity, unless your disclosure complies with the SOCI Act.

WHERE CHANGE IS HAPPENING

A man is sitting at a dark wooden table, looking at a laptop. The laptop screen displays a complex financial chart with multiple lines and bars, likely representing stock market data. The man is wearing a dark blue t-shirt and has a beard. He is looking intently at the screen. Another laptop is partially visible in the foreground on the left, also displaying a similar chart. The background is dark and out of focus, showing a wooden chair and a bottle on the table.

What You Need to Do to Prepare

WEBINAR | SOCI in 2024: Leveraging AI to Streamline Compliance

Critical Infrastructure Risk Management Programs

The responsible entities are required to adopt, maintain and comply with a critical infrastructure risk management program (CIRMP) by 18 August 2023.

The **CIRMP** is an 'all-hazards' risk management program and must, for each critical infrastructure asset the responsible entity is responsible for:

- identify each hazard
- minimise or eliminate any material risk of such a hazard occurring; and
- mitigate the relevant impact of such a hazard on the asset.



Responsible entities will need to demonstrate compliance with a designated cyber security framework or equivalent (Australian Standard AS ISO/IEC 27001:2015, Essential Eight, NIST's Framework for Improving Critical Infrastructure Cybersecurity, US Dept. Energy's Cybersecurity Capability Maturity Model or AEMO's The 2020-21 AESCSF Framework Core).

Critical Infrastructure Risk Management Programs

CISC to commence compliance activities in FY24-25, particularly in relation to:

- the Register of Critical Infrastructure Assets reporting obligation;
- the mandatory cyber security incident notification obligation;
- the CIRMP obligations; and
- notification obligations in relation to data storage or processing providers.



First annual report on CIRMPs due

Changes in Contemplation



Submissions on the proposed changes outlined in the Australian Cyber Security Strategy: Legislative Reforms Consultation Paper (Consultation Paper) closed on 1 March 2024.

The Australian Government is seeking feedback on 9 proposed legislative measures outlined in the Consultation Paper, being:

1. Mandatory standard for consumer-grade Internet of Things (IoT) technology
2. No-fault ransomware reporting obligations
3. Limited use for information shared with ASD and the Cyber Coordinator
4. A Cyber Incident Review Board to conduct no-fault reviews of incidents
5. Clarifying SOCI Act obligations for data storage systems for business¹critical data
6. Last resort consequence management powers for the Minister of Home Affairs
7. Amending protected information provisions to enable information sharing with government
8. Powers to remedy serious deficiencies in risk management programs
9. Consolidating telecommunications security requirements under the SOCI Act.

SOCI: Change is inevitable

Cyber Security Legislative Reforms

Consultation on proposed new cyber security legislation and on changes to the Security of Critical Infrastructure Act 2018

The protection of our cyber security and critical infrastructure is vital to Australia's national security and economic stability.

Increasing connectivity brings great benefits, but also great risk. Today, a cyber incident can spread instantaneously, disrupting interconnected systems and networks across the economy.

Such incidents have affected many of us, and we have learned from them.

How to engage us

- Consultations
- Contracts and tenders
- Industry engagement
- Committees and fora

Labor plan would give home affairs minister powers over critical infrastructure during cyber-attacks

Clare O'Neil releases consultation paper on new cybersecurity legislation, which proposes changes to Security of Critical Infrastructure Act

Get our morning and afternoon news emails, free app or daily news podcast



Australian Government Doubles Down On Cybersecurity in Wake of Major Attacks

Government proposes more modern and comprehensive cybersecurity regulations for businesses, government, and critical infrastructures providers Down Under.

John Leyden, Contributing Writer
March 27, 2024
5 Min Read

A close-up photograph of a black computer keyboard. One of the keys is replaced with a key that features the Australian flag. The word 'delete' is visible on a key to the right.



SOCI: Change is inevitable



Greater Internal Controls Required

- Increased Requirements to protect data storage systems that store business critical data
- Increased Cyber controls as new threats emerge



Greater Power for Minister of Home Affairs

- Introducing ‘last resort consequence’ management power for the Minister of Home Affairs to provide directions to critical infrastructure entity in event of incidents
- Providing a power for the Secretary of Home Affairs or the “relevant Commonwealth regulator” to direct a critical infrastructure entity to address deficiencies in its risk management program



Legislation Consolidation

- Consolidating telecommunications security requirements under the SOCI Act.
- Simplifying information sharing to make it easier for critical infrastructure entities to respond to high-risk, time-sensitive incidents

Source

- [2023-2030 Australian Cyber Security Strategy](#)
- Australian Cyber Security Strategy: Cyber Security Legislative Reforms | Consultation Paper

SOCI: Managing Change

Identify Changes



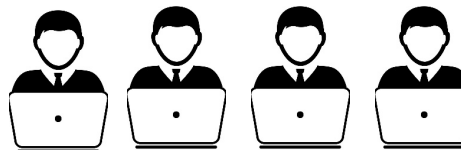
Change Assessments



Implement Management Systems



CustomerID	Country	Salesperson	OrderID	OrderDate	RequiredDate	ShipDate	ProductID	ProductName	Quantity
494	ABOUT	Michael Suyama	10355	15/11/2008	13/12/2008	20/11/2008	24	Guarana Fantastica	25
495	ABOUT	Michael Suyama	10355	15/11/2008	13/12/2008	20/11/2008	57	Francia's Courtliva	25
496	LAMAI	Michael Suyama	10350	11/11/2008	9/12/2008	3/12/2008	50	Valkoinen suklaa	15
497	LAMAI	Michael Suyama	10350	11/11/2008	9/12/2008	3/12/2008	69	Gudbrandilolust	18
498	LONEP	Michael Suyama	10317	30/09/2008	28/10/2008	10/10/2008	1	Chai	20
499	HUNGO	Michael Suyama	10298	5/09/2008	3/10/2008	11/09/2008	2	Chang	40
500	HUNGO	Michael Suyama	10298	5/09/2008	3/10/2008	11/09/2008	36	Indagati Sili	40
501	HUNGO	Michael Suyama	10298	5/09/2008	3/10/2008	11/09/2008	59	Francia's Courtliva	30
502	HUNGO	Michael Suyama	10298	5/09/2008	3/10/2008	11/09/2008	62	Tartar au sucre	15
503	LILAS	Michael Suyama	10296	3/09/2008	1/10/2008	11/09/2008	11	Queso Cabrales	12
504	LILAS	Michael Suyama	10296	3/09/2008	1/10/2008	11/09/2008	16	Pavlova	30
505	LILAS	Michael Suyama	10296	3/09/2008	1/10/2008	11/09/2008	69	Gudbrandilolust	15
506	QUIDE	Michael Suyama	10291	27/08/2008	24/09/2008	4/09/2008	13	Konbu	20
507	QUIDE	Michael Suyama	10291	27/08/2008	24/09/2008	4/09/2008	44	Cole Malacca	24
508	QUIDE	Michael Suyama	10291	27/08/2008	24/09/2008	4/09/2008	51	Marmalade Dried Apples	2
509	VINET	Michael Suyama	10274	6/08/2008	3/09/2008	16/08/2008	71	Flattenyost	20
510	VINET	Michael Suyama	10274	6/08/2008	3/09/2008	16/08/2008	72	Mozzarella di Giovanni	7
511	RATTC	Michael Suyama	10272	2/08/2008	30/08/2008	6/08/2008	20	Sir Rodney's Marmalade	6
512	RATTC	Michael Suyama	10272	2/08/2008	30/08/2008	6/08/2008	31	Gorgonzola Telino	40
513	RATTC	Michael Suyama	10272	2/08/2008	30/08/2008	6/08/2008	72	Mozzarella di Giovanni	24
514	SPUR	Michael Suyama	10271	1/08/2008	29/08/2008	30/08/2008	33	Gorgonzola	24
515	FOLKO	Michael Suyama	10264	24/07/2008	21/08/2008	23/08/2008	2	Chang	35



SOCI: Managing Change

Identify Changes



Change Assessments



Implement Management Systems



LexisNexis®



Change Alerts

Obligation Management

Assessment & Controls

Reporting



Demo of ReadiNow. Please watch the full webinar recording to view.

SOCI: Managing Change

Identify Changes



Change Assessments



Implement Management Systems



LexisNexis®



Change Alerts

Obligation Management

Assessment & Controls

Reporting



SOCI: Managing Change

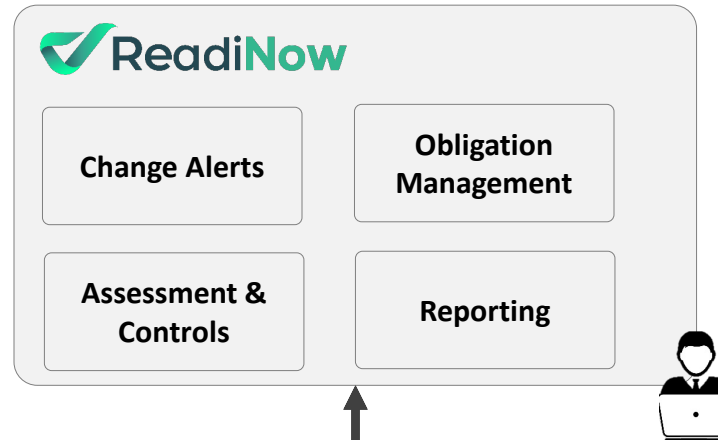
Identify Changes



Change Assessments



Implement Management Systems



Solutions

Governance, Risk & Compliance



BCM



Risk



Compliance



Audit



Incident



WHS



Vendor



Complaints



Key Indicators

IT/Cyber Solutions



IT Risk



IT Incident



ITDR



IT Compliance

Environment, Social & Governance



Materiality
Assessments



Disclosure



Metrics

Framework Specific



CPS230



SOCI

+ Any custom Use Case
Applications



Configurable
Forms & Screens



Dashboards



Analytics



Workflow



Mobile



Role Based
Security



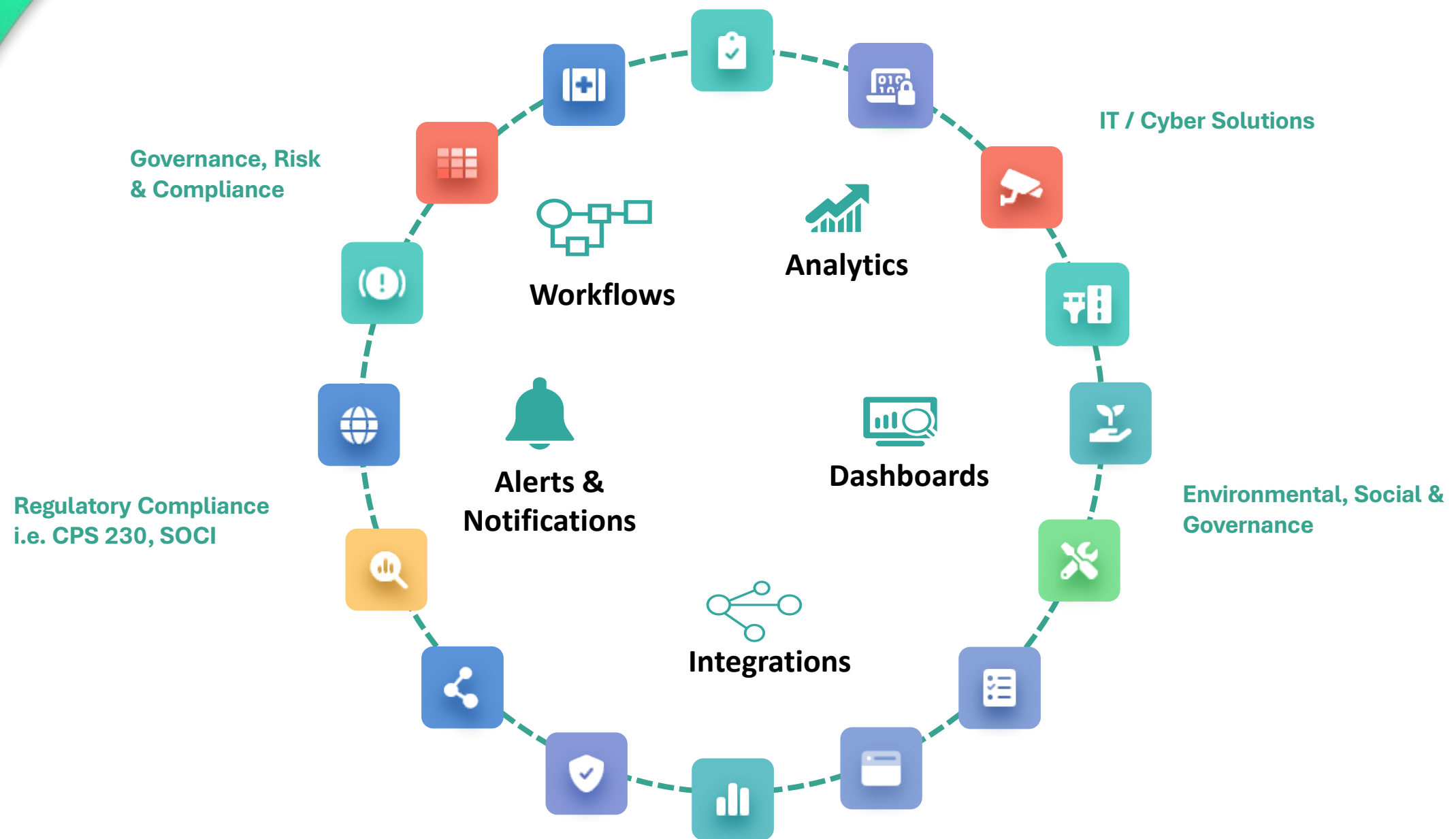
Document
Generation



Alerts &
Notifications



Integrations



SOCI: Managing Change

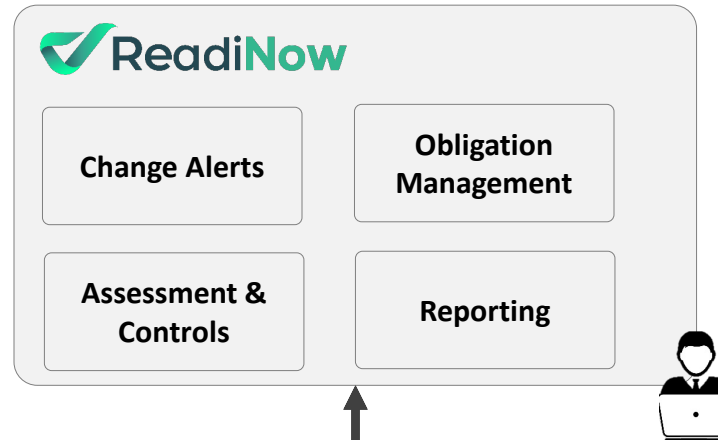
Identify Changes



Change Assessments



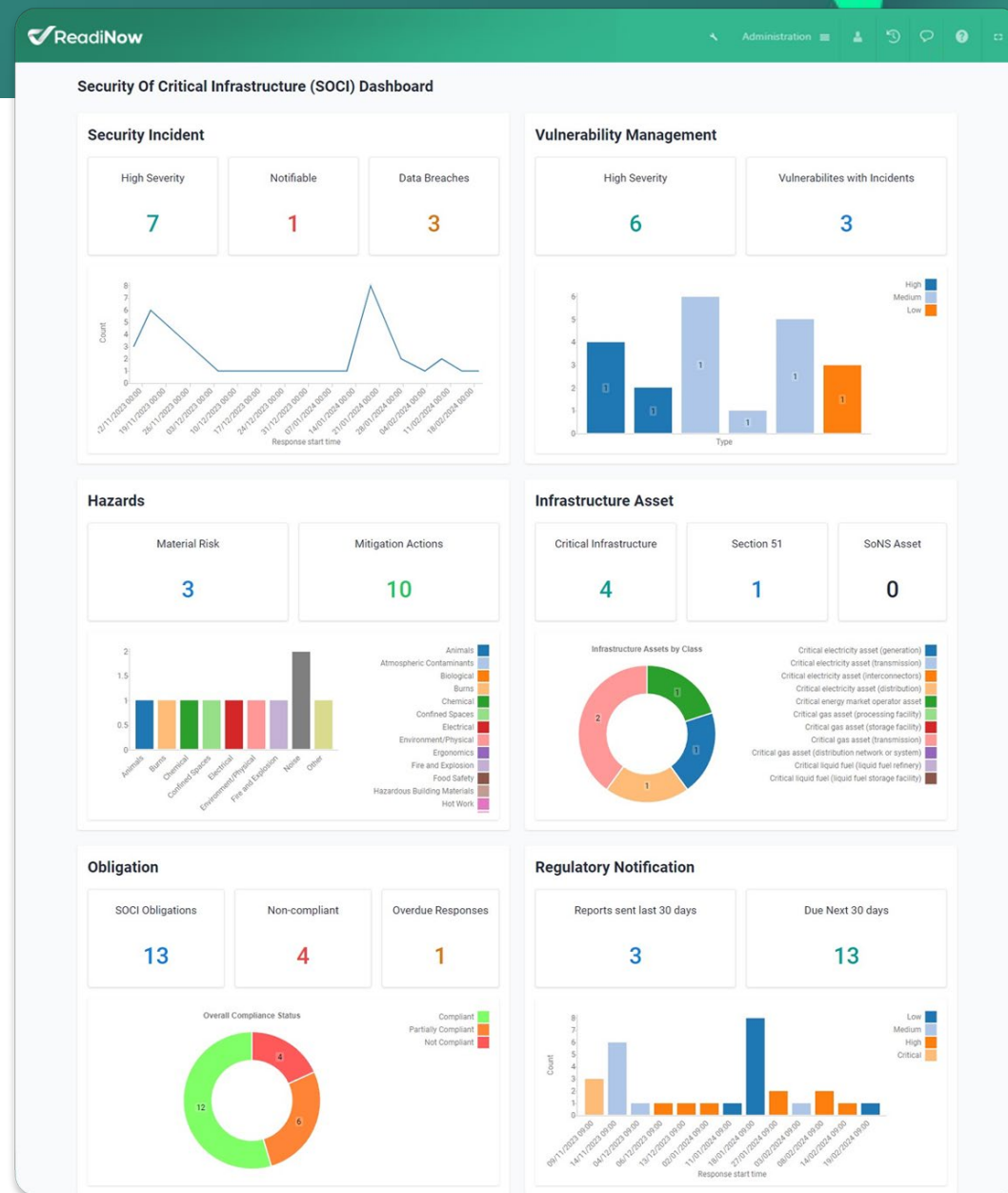
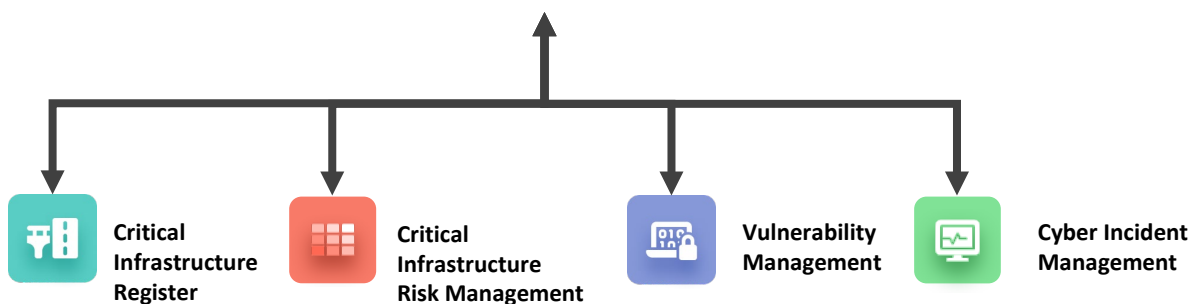
Implement Management Systems



SOCI: Managing Change

Executive Dashboard that covers key SOCI metrics including

- Critical Infrastructure Register
- Incident Management
- Vulnerability Management
- Obligation Management
- Notifications



Demo of ReadiNow. Please watch the full webinar recording to view.

Leveraging AI for SOCI Compliance



Understanding AI
types



Identifying use
cases



Key considerations
& Implications



Determining
technology

Understanding AI Types

Generative AI



Text Generation



Audio Generation



Audio to text



Image Generation

Predictive AI



Predictive Models



Image Recognition



Video Recognition

Understanding AI Types



Text Generation

- Generation of Risk Descriptions
- Creation of Risk Reports
- Automated report creation for compliance audits.
- Generating policy and procedure drafts based on regulations.
- Creation of regulatory update summaries.
- Drafting risk management strategies.
- Automatic generation of meeting minutes for GRC committee meetings.
- Summarizing risk assessment findings.
- Generation of risk-based scenarios for testing.



Audio Generation

- Voice-based alerts for compliance breaches.
- Customized audio instructions for employees during compliance training.
- AI-generated advisories for stakeholders.
- Audio summaries of regulatory changes.
- Voice prompts for guided risk assessments.
- Simulation sounds for risk scenarios.
- Automated voice messages for incident reporting.



Audio to text

- Transcription of GRC committee meetings.
- Automated transcription of whistleblower recordings.
- Converting recorded interviews during audits into text.
- Documentation of verbal agreements or understandings.



Predictive Models

- Predicting potential areas of non-compliance.
- Forecasting risk trends.
- Predictive analysis for fraud detection.
- Forecasting regulatory changes based on historical data.
- Modeling potential impacts of risks on organizational objectives.
- Estimating potential financial penalties for non-compliance.



Image Recognition

- Scanning documents for confidential information.
- Verifying authenticity of documents during audits.
- Recognition and tagging of GRC-related assets in images.
- Analyzing workplace images for safety or compliance violations.
- Identifying unauthorized printed materials in secure zones.
- Automating the categorization of paper-based records.
- Scanning images for potential cyber threats.



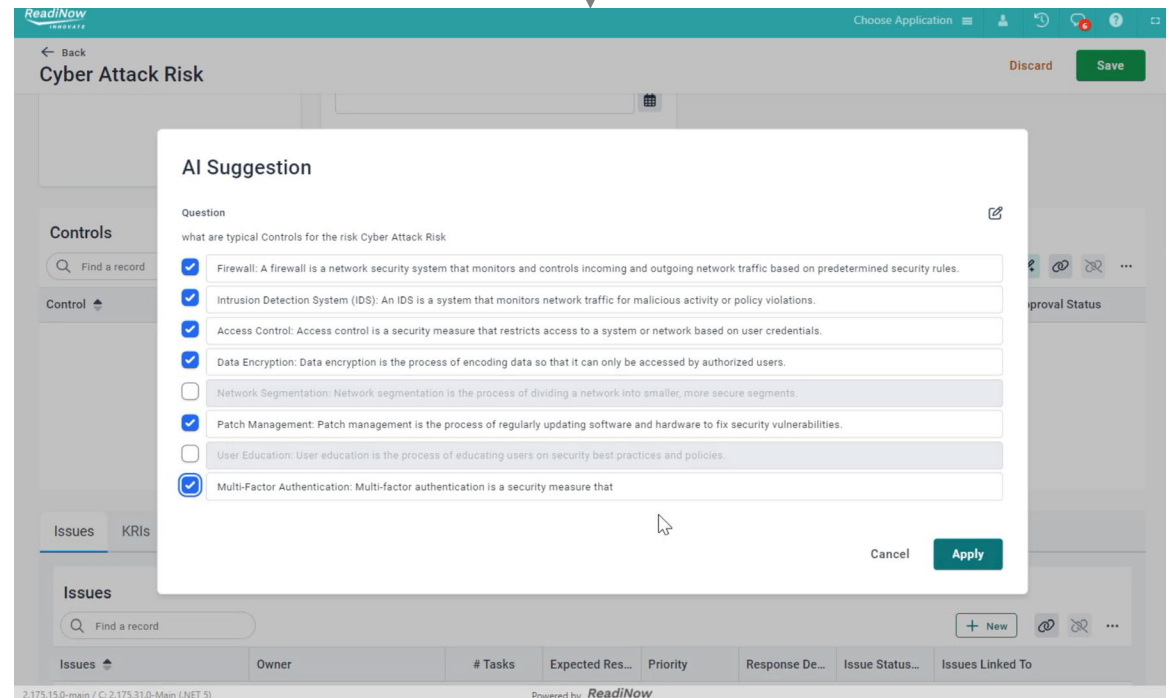
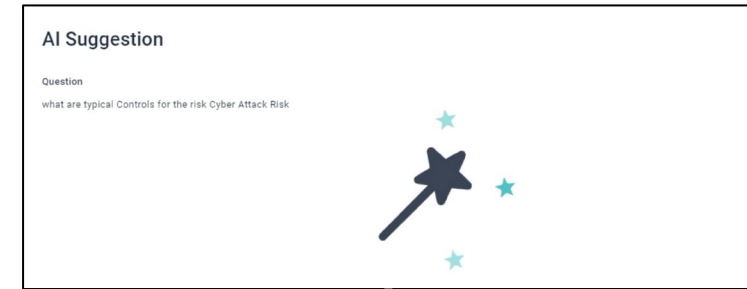
Video Recognition

- Monitoring facility videos for compliance with safety standards.
- Analyzing behavior patterns for fraud detection.

Implementing AI in SOCI Use Cases

AI Suggestions/Generative

- Suggesting Controls/Risk Treatment Plans
- Suggesting actions to take post incident
- Drafting Risk Reports
- Automated creation for compliance audits.
- Summarizing Incident findings.



Implementing AI in SOCI Use Cases

AI Scanning/Pattern Finding

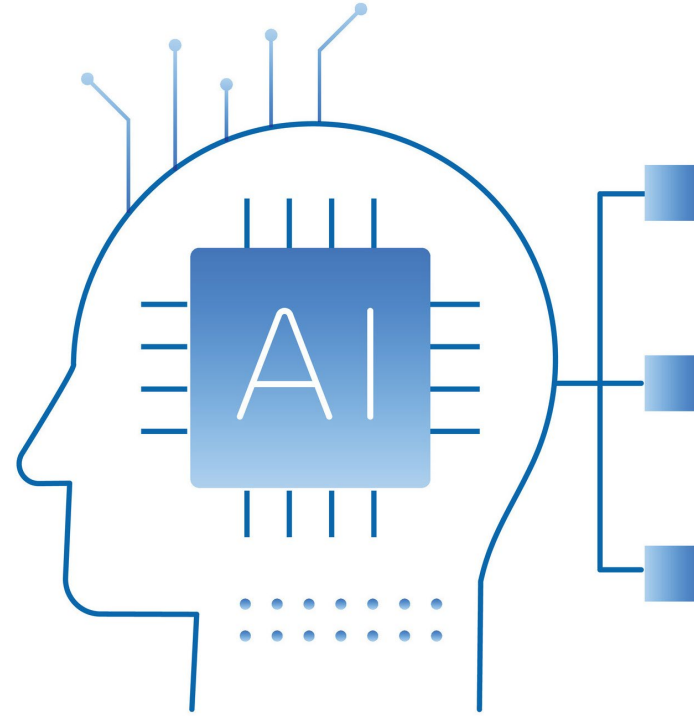
- Automated Vulnerability Scanning
- Pattern recognition in network traffic
- Forensic Analysis for Incident Investigation
- Identifying security configuration anomalies
- Risk concentrations



Implementing AI in SOCI Use Cases

AI Predictive Analytics

- Predictive vulnerability identification
- Risk Trending/Forecasting
- Predictive threat intelligence
- Compliance Risk Analysis



Key Considerations & Implications

Security/Data Privacy

Accuracy/Bias

Data Quality

Resources

Process Maturity

Webinar:
SOCl in 2024:
Leveraging AI to
Streamline
Compliance



Questions

Feedback Form

Please complete the
30 second feedback form

Thank you for joining us!

Download a free SOCI whitepaper and Risk & Compliance checklist
by scanning the QR codes below:



Whitepaper



Checklist



LexisNexis® | *Regulatory Compliance*

Thanks for joining us!

**Learn more about ReadiNow's
dedicated SOCI Module:**

